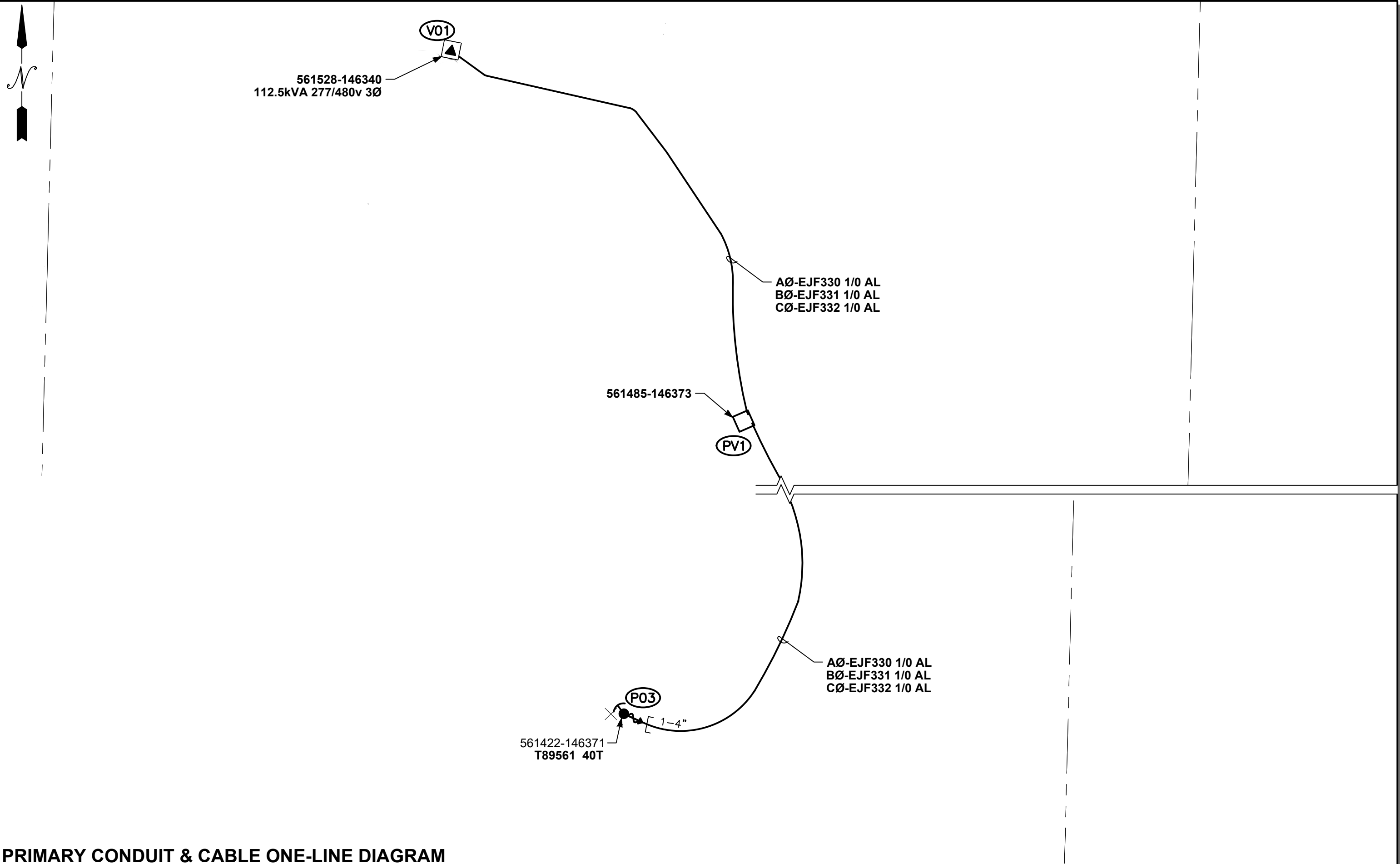
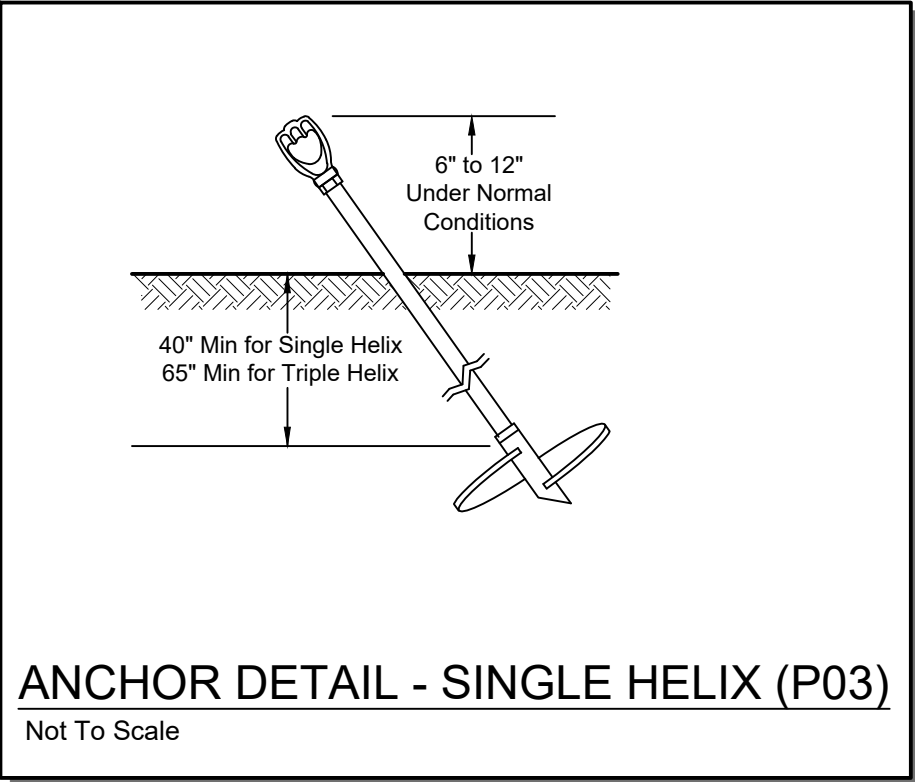
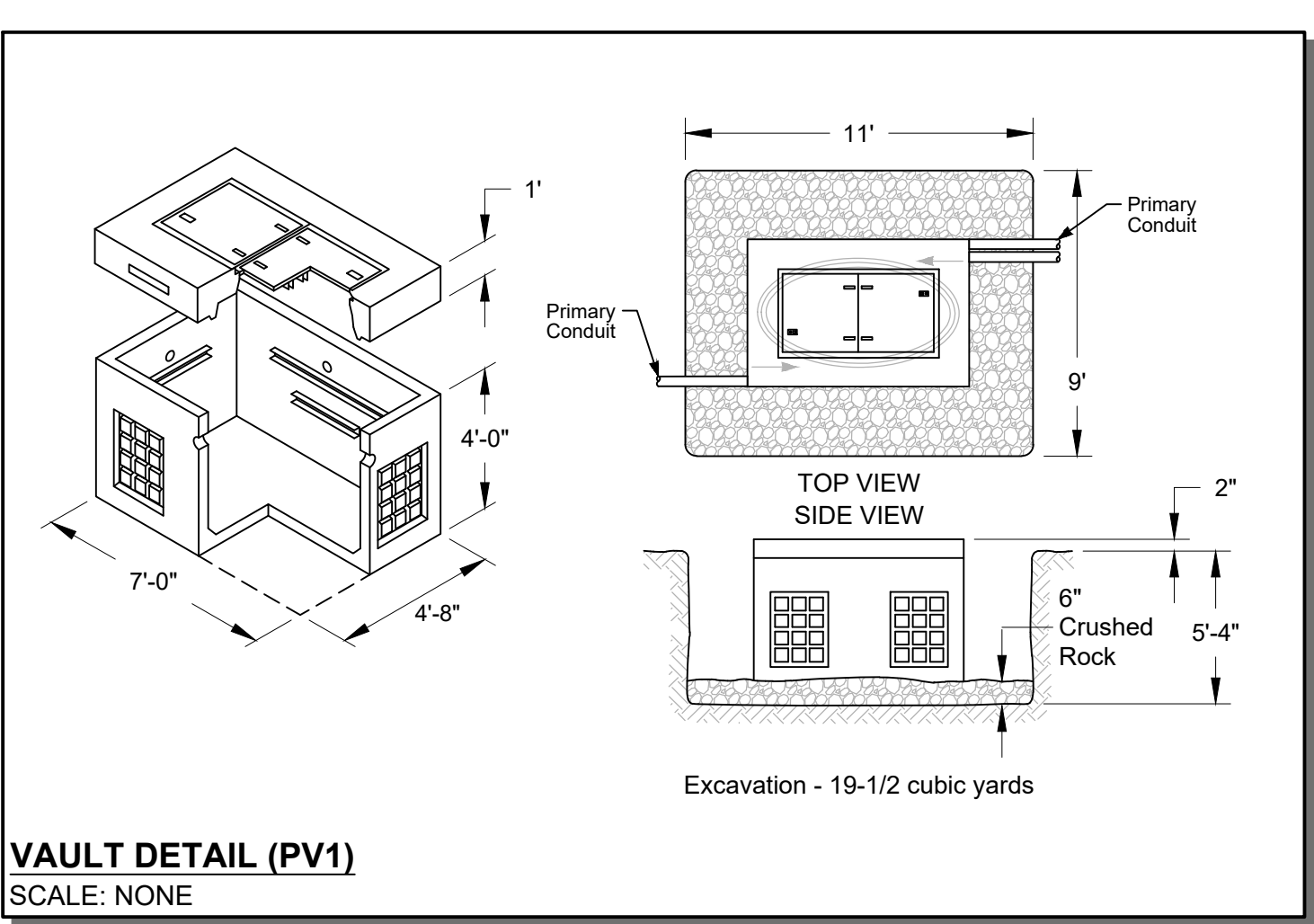
AUD

Apr. 13, 2023 -- 10:10am J:\Electric_Southwest\THURSTON\Jamie Silverson\Non_Residential\105101821_NisqFishHatchery_513310156\4_CAD\105101821_NisqFishHatchery.dwg By: pcourt



PRIMARY CONDUIT & CABLE ONE-LINE DIAGRAM
SCALE: NONE

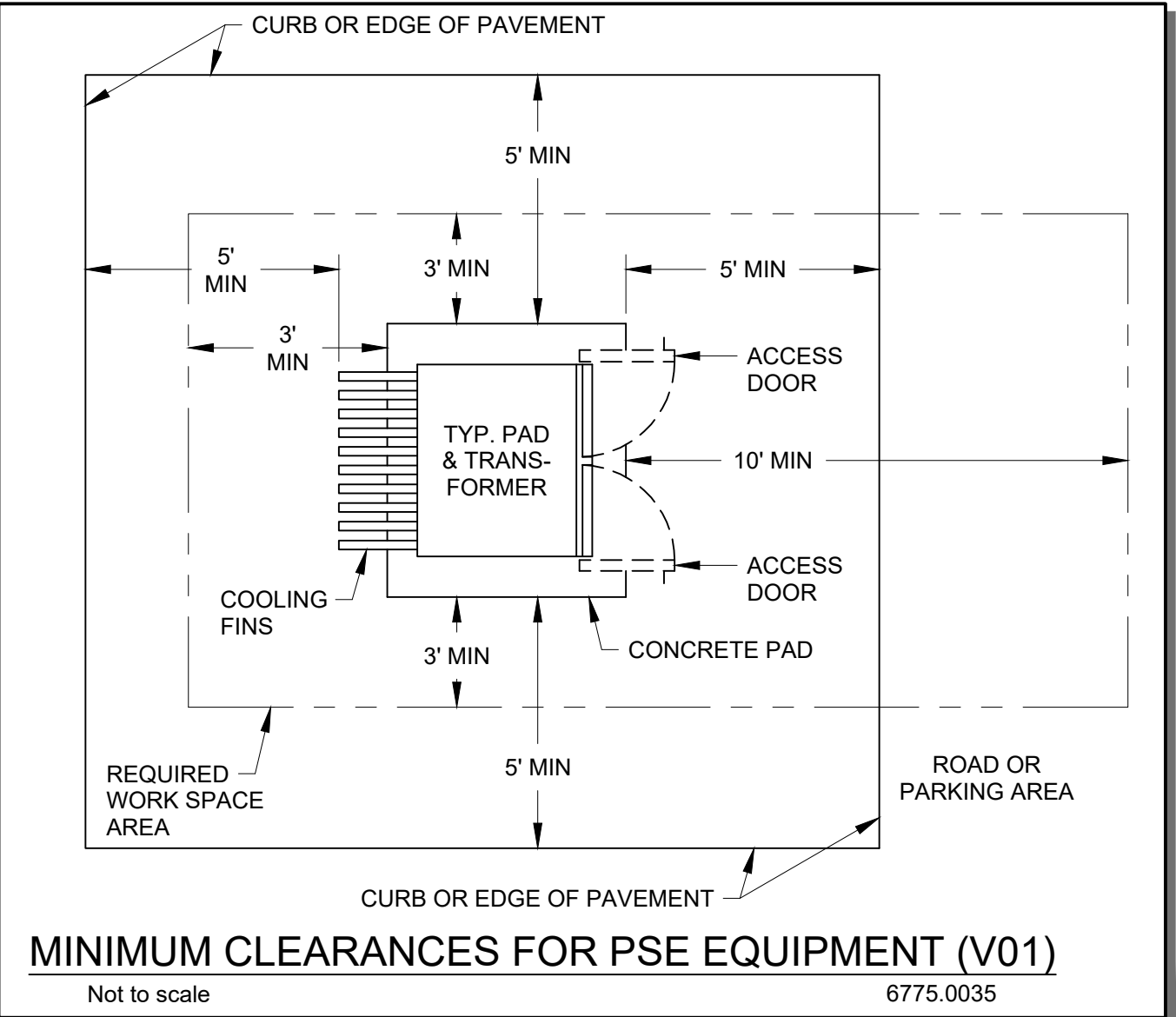
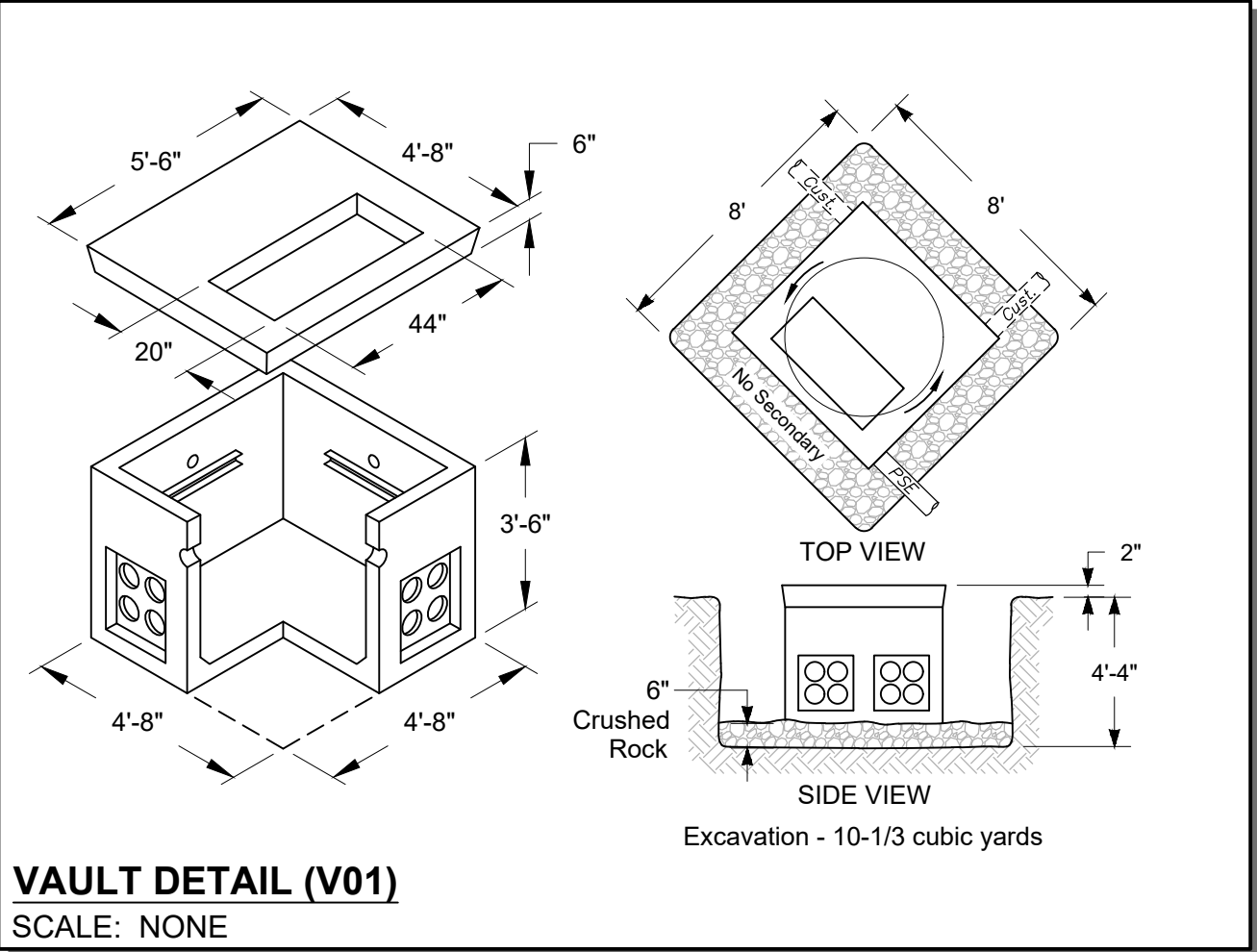
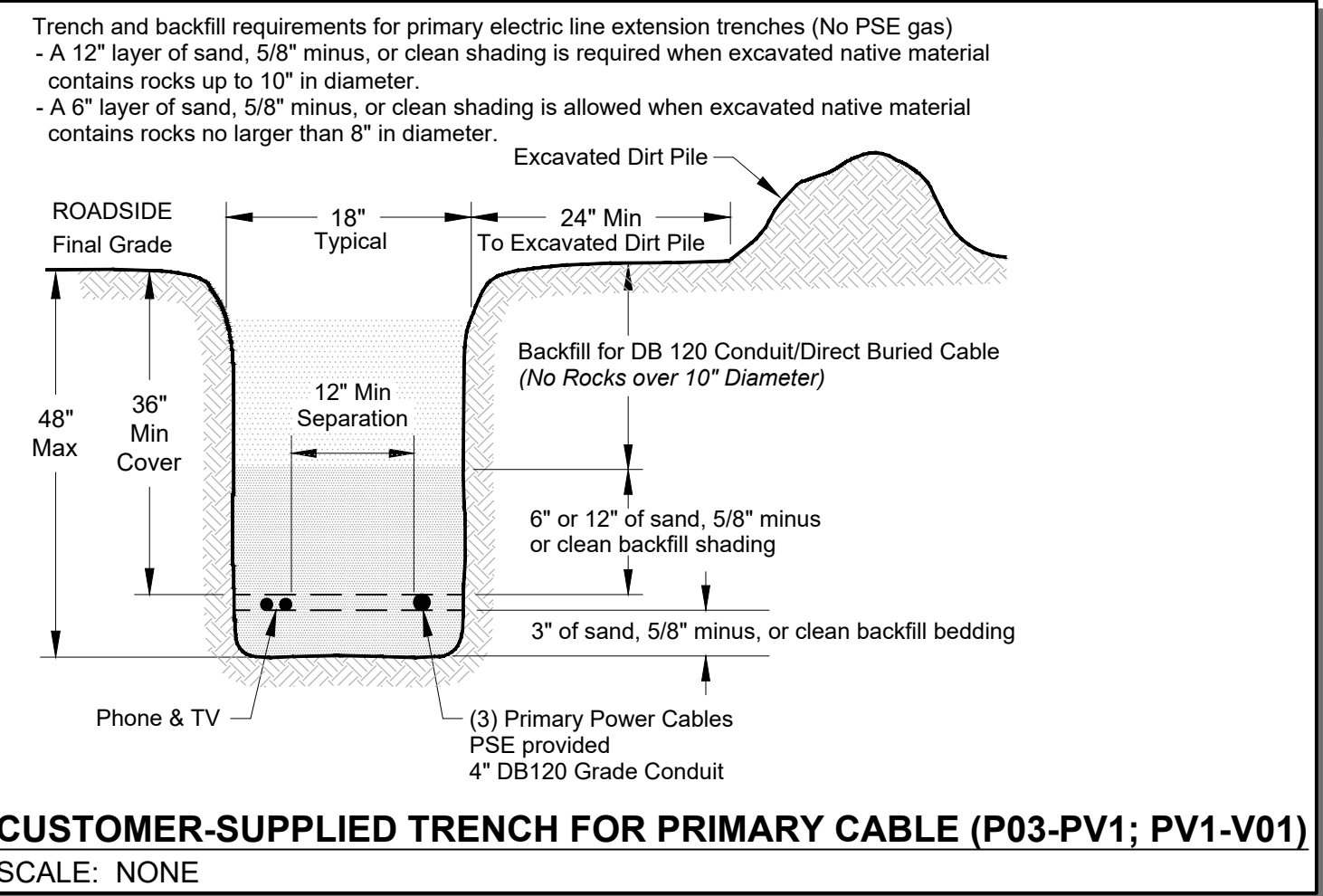


EROSION & SEDIMENT CONTROL REQUIREMENTS
EROSION & SEDIMENT CONTROL SHALL BE PER PSE STANDARD PRACTICE 0150.3200 TECHNIQUES FOR TEMPORARY EROSION & SEDIMENT CONTROL & ANY ADDITIONAL LOCAL JURISDICTION REQUIREMENTS. (LOCAL JURISDICTIONS MAY HAVE ADDITIONAL REQUIREMENTS INCLUDING NOTES DETAILING WHERE EROSION OR SEDIMENT CONTROL STRUCTURES ARE TO BE INSTALLED, CROSS SECTION DETAILS OF THE TYPICAL EROSION STRUCTURES, & SPECIAL REQUIREMENTS FOR WORK IN SENSITIVE AREAS.)

Primary Cable & Conduit Table (Foreman to Complete)																													
LOCATION		CONDUIT												PRIMARY CABLE											QTY OF LUBE (gal.)		AS BUILT INFORMATION		
From	To	Size (in)	Qty	Design Length (ft)	Actual Length (ft)	TYPE			BENDS			PULL (lbs)	PULL Rev (lbs)	Cable Size	Design Length (ft)	Actual Length (ft)	CABLE NUMBERS			MANUFACTURING INFORMATION			FOR FEEDER CABLE ONLY Check applicable box						
						DB120	HDPE	SCH 80	90°	45°	22°	11°						A	B	C	Manufacturer	Compound	Year	Tape	CN	#4/0 NEU	Design	As Built	Actual Amount Installed (Conduit & Cable)
P01	PV1	4"	1	690'		X			3	0	0	0	511	527	PRI 12KV 1/0 UG	730'		EJF330	EJF331	EJF332									
PV1	V01	4"	1	607'		X			3	0	0	0	336	350	PRI 12KV 1/0 UG	627'		EJF330	EJF331	EJF332									

POLE RETIREMENT TABLE						TEMP TRANSFERS			ST. LIGHT TRANSFERS			
Wk Loc	Pole Data				Pole		TEL	TV	FIBER	TRAN	RMVD	ID NUMBER
	Grid #	Length	Class	Year	TOPPED	RMVD						
	561422-146371	45'	CL2	NA								

POLE TABLE (NEW)					
Work Location	Pole Data				
	Grid #	Height	Class	Year	Remarks / Location Ref.
P02	561422-146371	45'	CL2		



Project Manager Contact Information: Manager: Jamie Silverson Cell Phone: 360-353-6005 E-Mail: Jamie.Silverson@PSE.com				For contacts below dial 1-888-CALL PSE (225-5773) CALL (800) 424-5555 2 BUSINESS DAYS BEFORE YOU DIG THIS SKETCH NOT TO BE RELIED UPON FOR EXACT LOCATION OF EXISTING FACILITIES			
Developer Locates Req'd No PSE Locates Req'd Yes Outages Req'd No Flagging Req'd No				REAL ESTATE/EASEMENT		PERMIT	
				REQ'd	N/A		
				FUNCTION	CONTACT	PHONE NO	DATE
				PROJECT MGR	J. Silverson	360-353-6005	1/30/23
				ENGR - POWER	P. Courtney	253-888-2522	2/8/23
				ENGR - GAS			
				DRAWN BY	P. Courtney	253-888-2522	2/8/23
				CHECKED BY	CVW		7/12/23
				APPROVED BY			
				FOREMAN #1			
				FOREMAN #2			
				MAPPING			
JOINT FACILITIES ARRANGEMENTS							
UTILITIES CONTACT PHONE#							
PSE PUGET SOUND ENERGY DESIGNED BY PSE				Nisqually Fish Hatchery Cmtrl - 3Ø Line Extension 13650 Peter Kalama Dr SE Olympia, WA 98513			
				INCIDENT	MAOP		
				Gas Order	Elect Order		
				105101821	105101821		
				SCALE	PAGE		
				AS NOTED	02/02		

105101821